

## pCEC analysis of Cordyceps

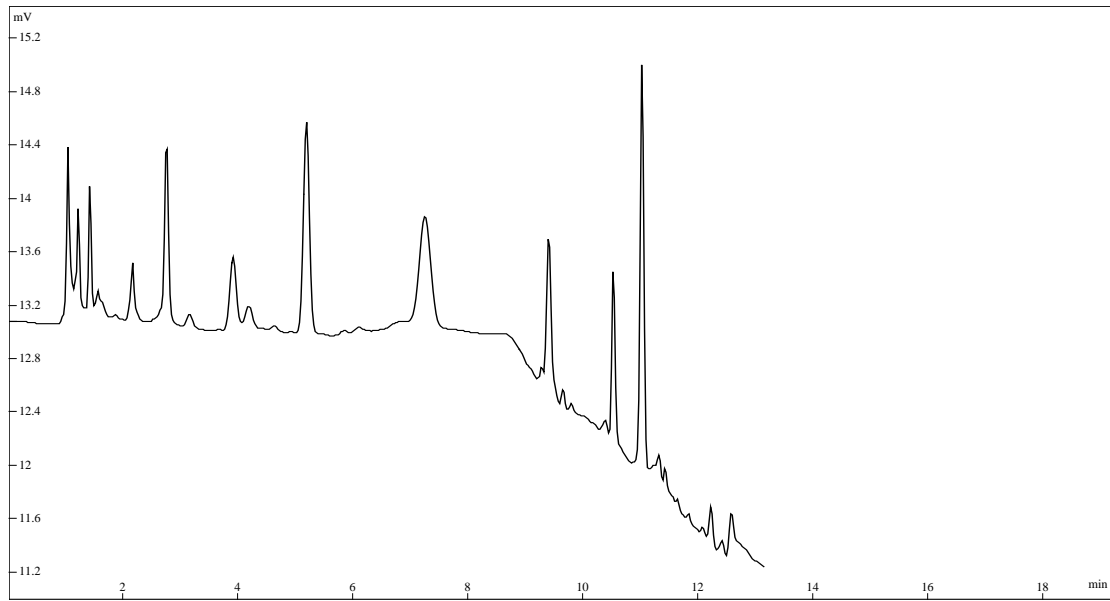


Fig. pCEC analysis of Cordyceps

Conditions:

Column: EP-150-30/55-5-C18

Mobile phase: A: water+0.01% HFBA

B: 80% ACN + 20% water +0.01% HFBA

Gradient:

t (min)	A (%)	B (%)
0	98	2
8	98	2
15	90	10
35	70	30

Flow rate: 0.05ml/min

Back pressure: 2000 psi

Voltage: 4 kv

Detector: UV, 260 nm

Sample: cordyceps