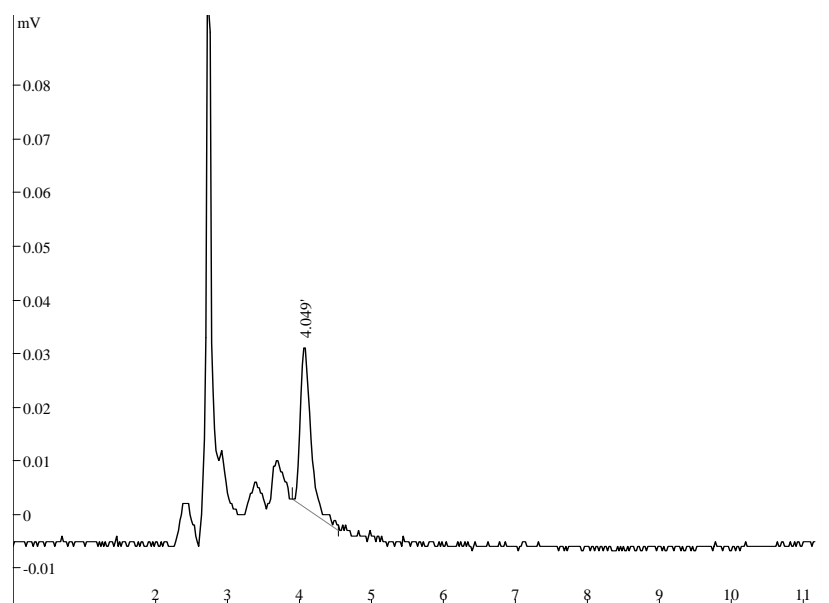


Separation of ADM by pCEC, detected by LIF



Condition:

Capillary column: EP-100-20/45-3-C18

Mobile Phase: CH₃OH: ACN: 0.01mol/l NH₄H₂PO₄: HAc = 50:22:28:0.5

Flow rate: 0.02mL/min

Pressure: 2000psi

Power Voltage: 2 kV

Detector: TriSepTM-2100LIF

Emission wavelength: 473nm

Excitation wavelength: 520nm