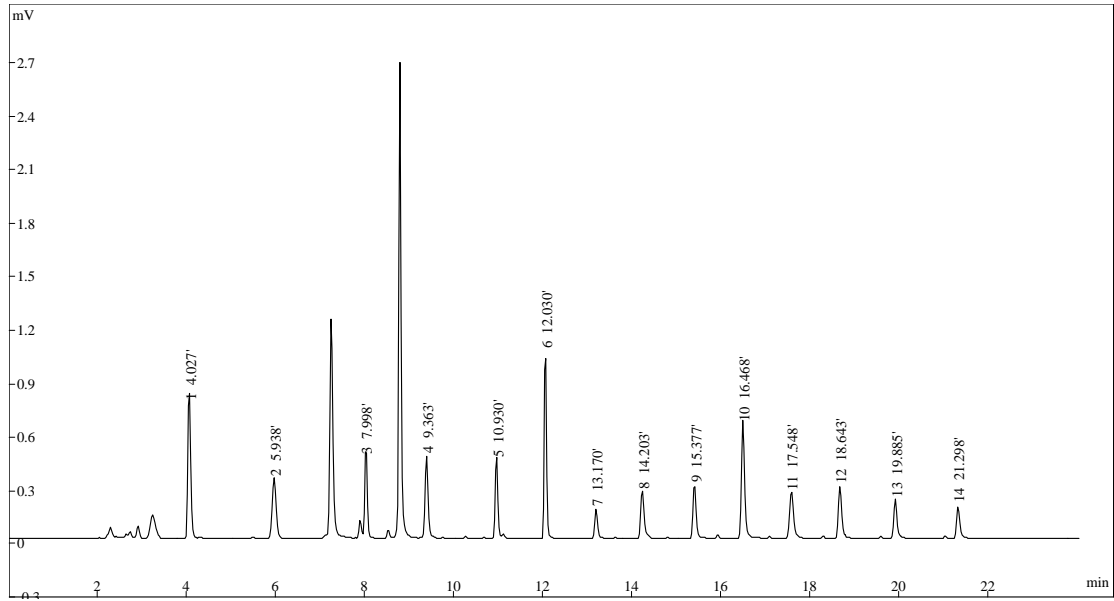


## Separation of 14 aliphatic amine-FITC derivatives by pCEC, detected by LIF



Condition:

Capillary column: EP100-20-45-3 C18

Mobile Phase: (A) 10%(v/v) ACN + 10% 40mM NaH<sub>2</sub>PO<sub>4</sub> +100ul 1% H<sub>3</sub>PO<sub>4</sub>+H<sub>2</sub>O

(B) 65%(v/v) ACN + 10% 40mM NaH<sub>2</sub>PO<sub>4</sub> +100ul 1% H<sub>3</sub>PO<sub>4</sub>+ H<sub>2</sub>O

Gradient: 0~30min 100% to 0% A

Pressure: 10 MPa

Power Voltage: 5 kV

Detector: TriSep<sup>TM</sup>-2100LIF,

Emission wavelength: 473nm

Excitation wavelength: 520nm

Sample: Aliphatic Amines C1~C14

Concentration:  $5 \times 10^{-8}$  mol/L