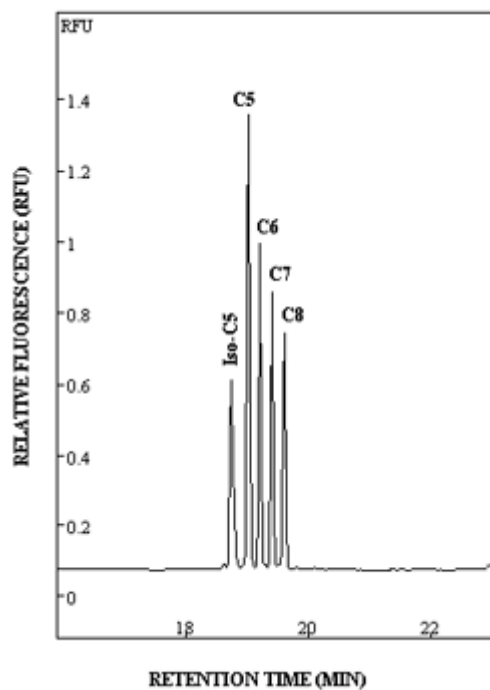


Separation of 5 aliphatic amine-FITC derivatives by pCEC, detected by LIF



Column: EP-100-20-3-C18

Solvent:

(A) 64% (v/v) CH₃CN/36% 4mM Na₂HPO₄ (pH=8)

(B) 20% (v/v) CH₃CN/80% 4mM Na₂HPO₄ (pH=8)

Conditions: 0 – 7 min 0% A. 7 – 20min 0% - 100 A

Pressure: 6.4 Mpa

Power Voltage: 1kV

Detector: LIF detector

Emission: 473 nm

Excitation: 520 nm

Injection: 20nL

Sample:

1. 3-methyl-isobutylamine
2. n-pentylamine
3. n-hexylamine
4. n-heptylamine
5. n-octylamine