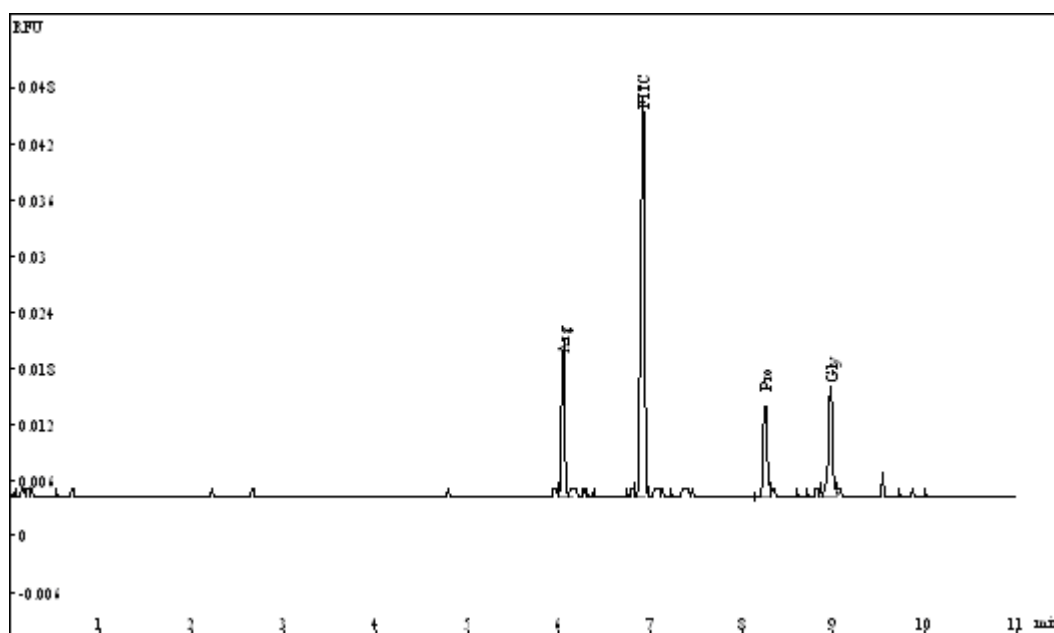


Separation of amino acids by CE, detected by LIF



Capillary: 100 μ m i.d. \times 58cm

Buffer: 10mM borate buffer (pH=9.3)

Voltage: 10kV

Detector: TriSepTM-2100LIF

Emission wavelength: 473nm

Excitation wavelength: 520nm

Injection: 10kV,2S

Sample: 7×10^{-9} M Amino Acid, FITC dyed