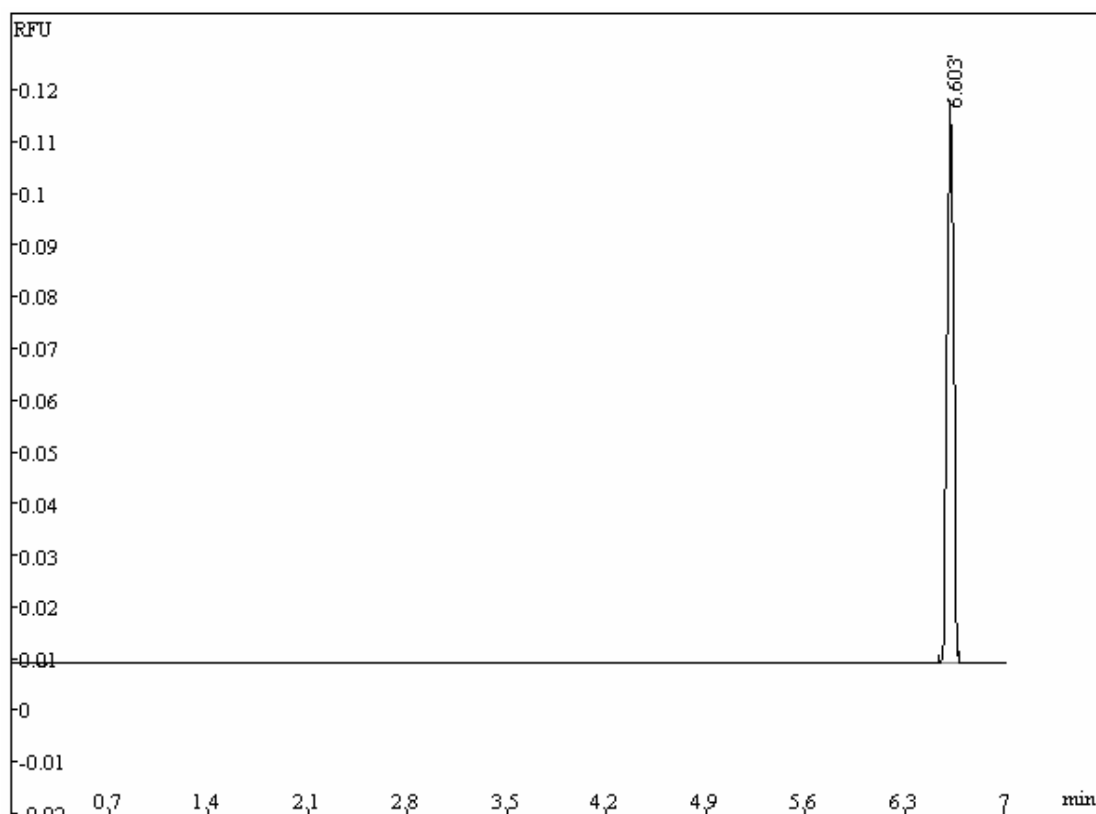


## Separation of FITC by CE, detected by LIF



Capillary: 100 $\mu$ m i.d. $\times$ 58cm

Buffer: 10mM borate buffer (pH9.3)

Voltage: 12kV

Detector: TriSep<sup>TM</sup>-2100LIF

Emission wavelength: 473nm

Excitation wavelength: 520nm

Injection: 12kV,5S

Sample:  $4\times 10^{-10}$  M FITC