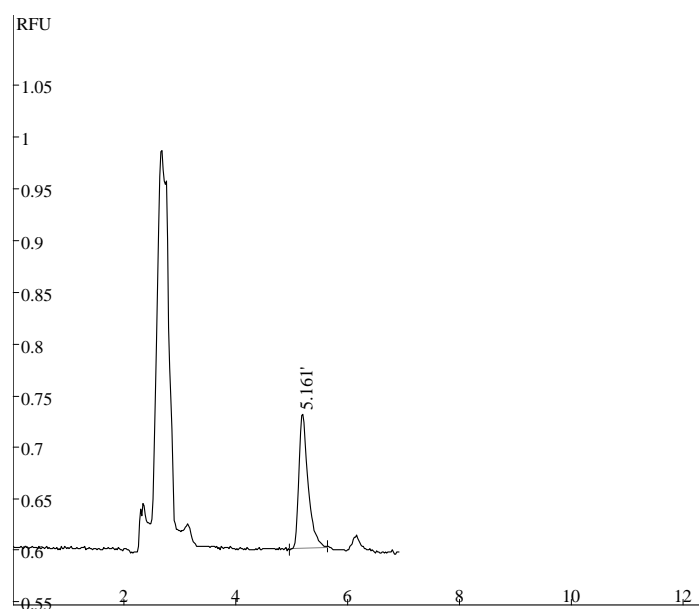


Separation of ADM by HPLC, detected by LIF



Condition:

Column: Unimicro Kromasil C18 5 μ m 250*4.6mm

Mobile phase: CH₃OH:CH₃CN:0.01 mol/l NH₄H₂PO₄:CH₃COOH=50:22:28:0.5

Flow rate: 1.0ml/min

Detector: TriSepTM-2100LIF

Emission wavelength: 473nm

Excitation wavelength: 520nm

Sample concentration: 0.2 mg/L

Retention time of ADM: 5.161min