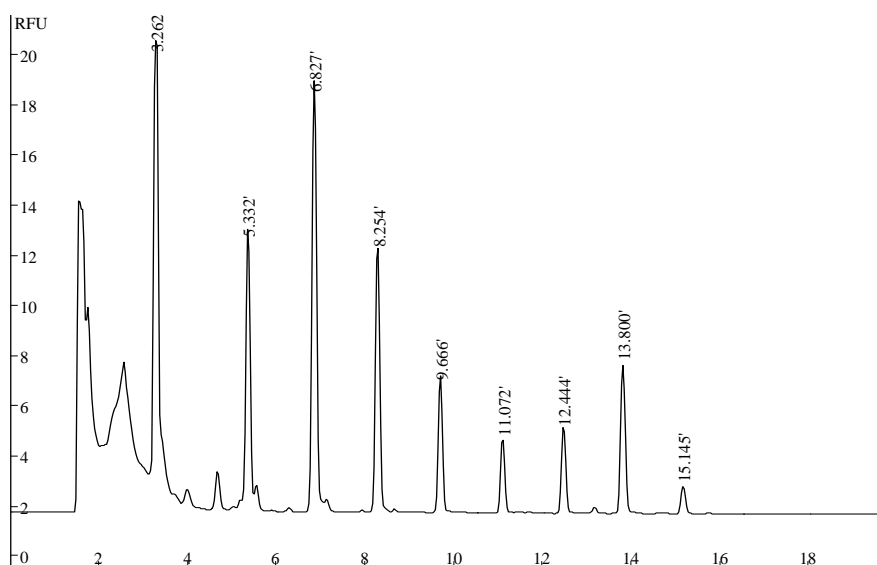


Separation of aliphatic amine-FITC derivatives by HPLC, detected by LIF



Condition:

Column: Unimicro Kromasil C18 5 μ m 250*4.6mm

Mobile Phase: A) 40mM Na_2HPO_4 : H_2O : 1% H_3PO_4 =10:90:0.1

B) 40mM Na_2HPO_4 : H_2O : ACN:1% H_3PO_4 =10:25:65:0.1

Gradient: 0~25min A from 70% to 0%

Flow rate: 1.0ml/min

Emission wavelength: 473nm

Excitation wavelength: 520nm

Sample: FITC (3.262min)

n-amylamine (5.332 min)

n-hexylamine (6.827 min)

n-heptylamine (8.254min)

n-octylamine (9.666 min)

n-nonylamine (11.072 min)

n-quinamine (12.444 min)

n-undecylamine (13.800 min)

n-dodecylamine (15.145 min)